



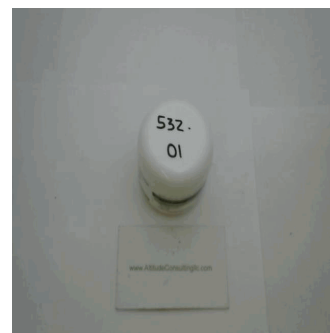
Customer: Dominion Management Co.

Address: 710 Buck Hill Rd.  
Newland, NC 28657

Sample ID: CBD-Salve 2000mg

Matrix: Topical

Labnumber: 21A0532-01 Total mass or volume per unit (g or mL): 56.69



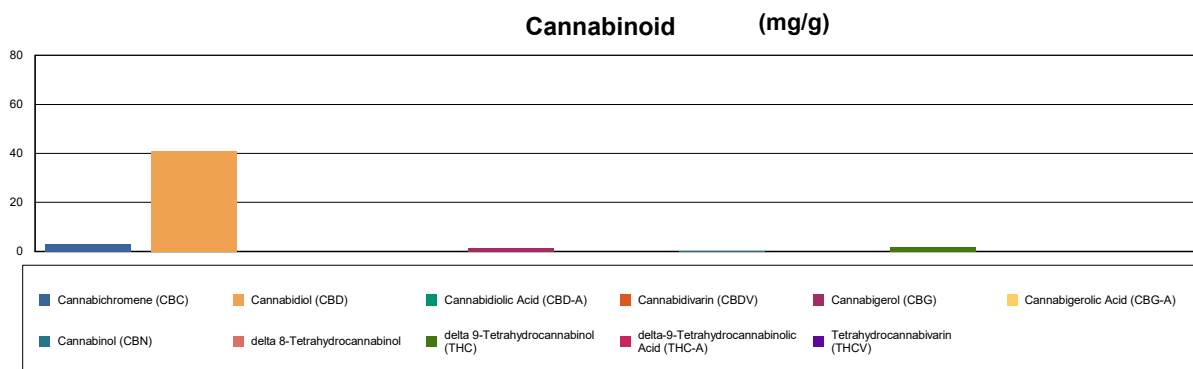
# Cannabinoid Profile

Test Conditions: 20°C  
Extraction Technician: SH  
Analytical Chemist: SH

Extraction Date(s)	Analysis Date(s)
1/25/2021	1/26/2021

Cannabinoids (HPLC)		Results		
	LOD (mg/g)	%	mg/g	mg/container
Cannabidiol (CBD)	<0.090			
Cannabidiolic Acid (CBD-A)	<0.090			
Cannabigerolic Acid (CBG-A)	<0.090			
Cannabigerol (CBG)		0.14	1.37	77.5
Cannabidiol (CBD)		4.07	40.7	2310
Tetrahydrocannabivarin (THCV)	<0.090			
Cannabinol (CBN)		0.009	0.087	4.93
delta 9-Tetrahydrocannabinol (THC)		0.20	1.96	111
delta 8-Tetrahydrocannabinol	<0.090			
Cannabichromene (CBC)		0.28	2.83	160
delta-9-Tetrahydrocannabinolic Acid (THC-A)	<0.090			
<b>Cannabinoids Total</b>		<b>%</b>	<b>mg/g</b>	
Max Active THC		0.20	1.96	
Max Active CBD		4.07	40.70	
T.Active Cannabinoids		4.70	47.00	
Total Cannabinoids		4.70	47.00	

Following USDA guidelines on uncertainty, Altitude Consulting's uncertainty is calculated to be +/- 2% for all cannabinoids using a coverage factor of 2 (95% confidence interval). Measurement uncertainty has not been factored into reported values.



**Gary Brook - Laboratory Director - 1/26/2021**

Reporting Limits will vary based on sample extraction weight used for the analysis.

Altitude Consulting, LLC utilizes NIST traceable Reference Standards and Certified Reference Material to calibrate analytical instruments along with proven analytical methods. The methods are applied in the most ethical manner following good laboratory practice guidelines. The results of this report are based solely on the sample submitted and cannot be reproduced. Decision Rule: Measurement uncertainty is not accounted for in the reported values. Results are based solely on calculated numbers. Altitude Consulting makes no Statements of conformity.



Customer: Dominion Management Co.

Address: 710 Buck Hill Rd.  
Newland, NC 28657

Sample ID: 2000mg Tincture

Matrix: Tincture

Labnumber: 21A0532-02 Total mass or volume per unit (g or mL): 30

Density (g/mL): 1.0082



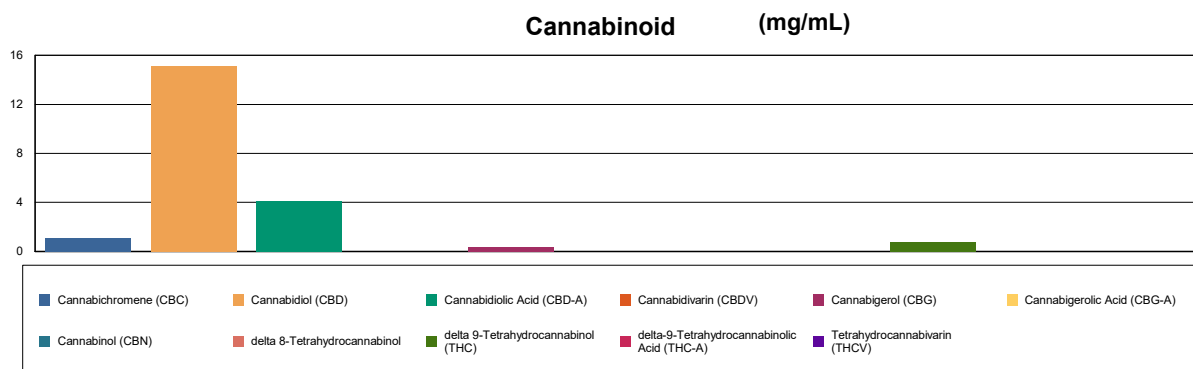
## Cannabinoid Profile

Test Conditions: 20°C  
Extraction Technician: SH  
Analytical Chemist: SH

Extraction Date(s)	Analysis Date(s)
1/25/2021	1/25/2021

Cannabinoids (HPLC)		Results		
	LOD (mg/mL)	%	mg/mL	mg/bottle
Cannabidiol (CBD)	<0.20	1.51	15.1	454
Cannabidiol Acid (CBD-A)		0.41	4.09	123
Cannabigerol (CBG)		0.03	0.338	10.2
Cannabigerol Acid (CBG-A)	<0.20			
Cannabichromene (CBC)		0.11	1.09	32.6
Cannabinol (CBN)	<0.20			
delta 9-Tetrahydrocannabinol (THC)		0.08	0.791	23.7
delta 8-Tetrahydrocannabinol	<0.20			
Tetrahydrocannabivarin (THCV)	<0.20			
delta-9-Tetrahydrocannabinolic Acid (THC-A)	<0.20			
<b>Cannabinoids Total</b>		<b>%</b>	<b>mg/mL</b>	
Max Active THC		0.08	0.79	
Max Active CBD		1.87	18.69	
T.Active Cannabinoids		1.73	17.30	
Total Cannabinoids		2.14	21.40	

Following USDA guidelines on uncertainty, Altitude Consulting's uncertainty is calculated to be +/- 2% for all cannabinoids using a coverage factor of 2 (95% confidence interval). Measurement uncertainty has not been factored into reported values.



**Gary Brook - Laboratory Director - 1/26/2021**

Reporting Limits will vary based on sample extraction weight used for the analysis.

Altitude Consulting, LLC utilizes NIST traceable Reference Standards and Certified Reference Material to calibrate analytical instruments along with proven analytical methods. The methods are applied in the most ethical manner following good laboratory practice guidelines. The results of this report are based solely on the sample submitted and cannot be reproduced. Decision Rule: Measurement uncertainty is not accounted for in the reported values. Results are based solely on calculated numbers. Altitude Consulting makes no Statements of conformity.



Customer: Dominion Management Co.

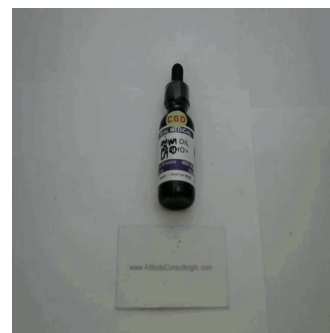
Address: 710 Buck Hill Rd.  
Newland, NC 28657

Sample ID: 4000mg Tincture

Matrix: Tincture

Labnumber: 21A0532-03 Total mass or volume per unit (g or mL): 30

Density (g/mL): 1.0082



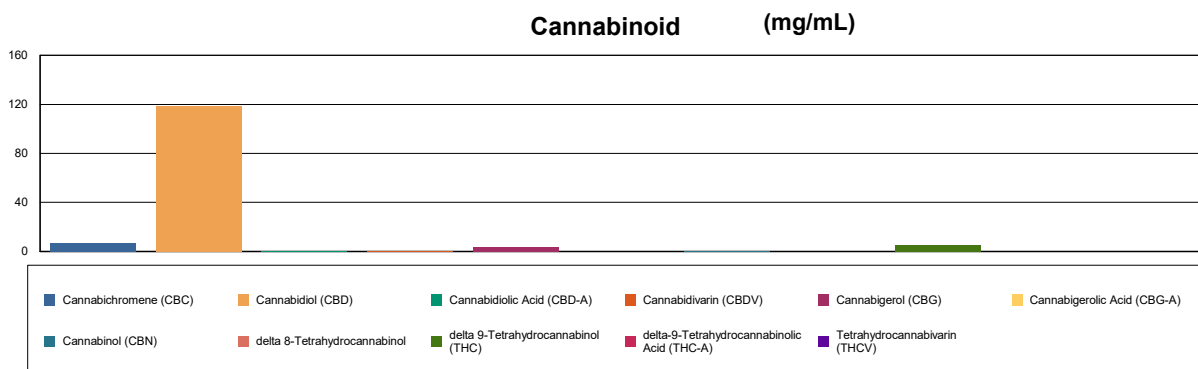
# Cannabinoid Profile

Test Conditions: 20°C  
Extraction Technician: SH  
Analytical Chemist: SH

Extraction Date(s)	Analysis Date(s)
1/25/2021	1/25/2021

Cannabinoids (HPLC)		Results		
	LOD (mg/mL)	%	mg/mL	mg/bottle
Cannabidiol (CBD)		11.86	119	3560
Cannabidiol (CBD)		11.86	119	3560
Tetrahydrocannabivarin (THCV)	<0.20			
Cannabinol (CBN)		0.02	0.158	4.74
delta 9-Tetrahydrocannabinol (THC)		0.48	4.85	145
delta 8-Tetrahydrocannabinol	<0.20			
Cannabichromene (CBC)		0.69	6.95	208
delta-9-Tetrahydrocannabinolic Acid (THC-A)	<0.20			
Cannabinoids Total		%	mg/mL	
Max Active THC		0.49	4.85	
Max Active CBD		11.94	119.43	
T.Active Cannabinoids		13.40	134.00	
Total Cannabinoids		13.50	135.00	

Following USDA guidelines on uncertainty, Altitude Consulting's uncertainty is calculated to be +/- 2% for all cannabinoids using a coverage factor of 2 (95% confidence interval). Measurement uncertainty has not been factored into reported values.



Gary Brook - Laboratory Director - 1/26/2021

Reporting Limits will vary based on sample extraction weight used for the analysis.

Altitude Consulting, LLC utilizes NIST traceable Reference Standards and Certified Reference Material to calibrate analytical instruments along with proven analytical methods. The methods are applied in the most ethical manner following good laboratory practice guidelines. The results of this report are based solely on the sample submitted and cannot be reproduced. Decision Rule: Measurement uncertainty is not accounted for in the reported values. Results are based solely on calculated numbers. Altitude Consulting makes no Statements of conformity.